

Bendable Extrusion

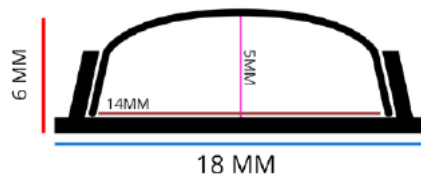
Product Image



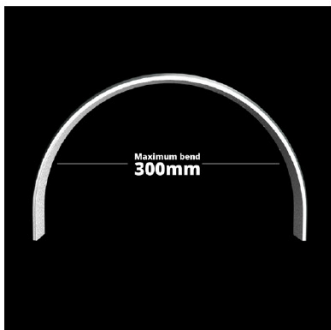
This extrusion is only suitable for IP20 none waterproof led tapes.
Included in the set is: 5 x 2mtr Extrusion, 5 x Covers, 10 x end caps and 20 x fixing clips.

- You may cut the extrusion using a good quality hack-saw – do this before any bending takes place.
- Bend first and fix. Fit the LED tape and clip the cover on – do not fit the led tape first as this will stretch and damage the led PCB.

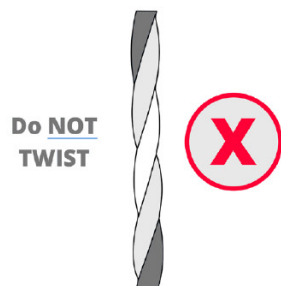
Dimensions



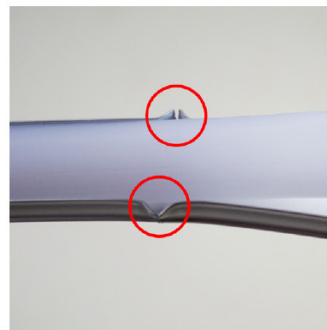
INSTALLATION & OPERATING INSTRUCTIONS



Maximum bend 300mm either way



Do NOT twist



Over bending will split the extrusion and will make it impossible to fit the cover



Do not repeatedly bend plan the installation